

# How to create a summer garden that **ATTRACTS POLLINATORS**

Planting pollinator-friendly plants in your garden can help ensure the health and productivity of your garden and provide food and habitat for local pollinators.

## Choosing The Right Plants

Choosing the right plants is essential to creating a vibrant summer garden that attracts pollinators. Here are a few names you might want to think about:



Bee Balm



Salvia



Lavender



Echinacea



Zinnias



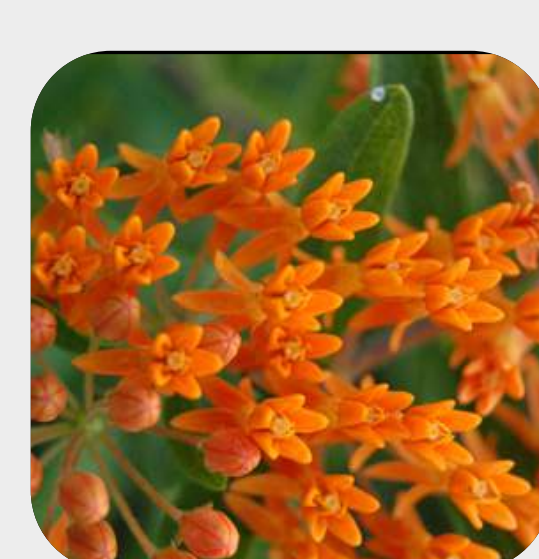
Milkweed



Black-eyed Susan



Phlox



Butterfly Weed



Sunflowers

## Provide a water source.

### Shallow dish

Fill a shallow dish with water and place it in a sunny spot in your garden. Be sure to change the water frequently to prevent mosquitoes from breeding.

### Birdbath

A bird bath is another option for providing water in your garden. Be sure to keep it filled with fresh water and clean it regularly to prevent the growth of algae.

### Dripping hose

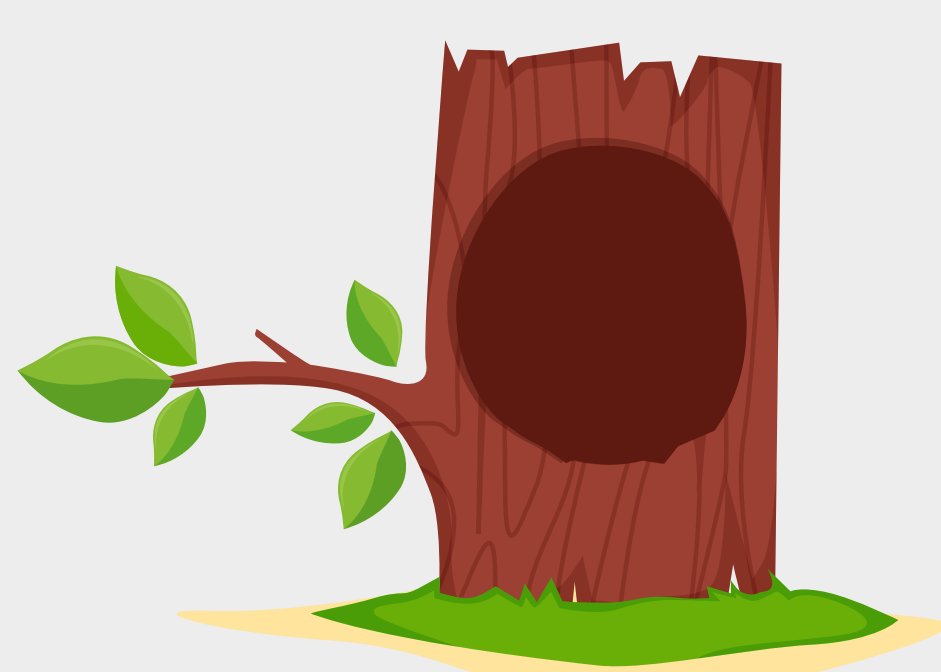
If you have a drip irrigation system in your garden, you can place the end of the hose in a shallow dish or bird bath to create a dripping water source.

### Water features

Water features like fountains or ponds can also attract pollinators. Be sure to choose a water feature with a gentle flow of water, as pollinators can drown in fast-moving water.

Remember to place your water source in a sunny spot in your garden, as pollinators are attracted to warm, sunny areas. With a little effort, you can provide a reliable water source for pollinators and attract them to your garden all season long.

### Providing Shelter



Pollinators need shelter to rest and hide from predators. Planting dense shrubs and trees, leaving some bare ground, and providing nesting sites like bee houses can provide a safe haven for pollinators.

### Avoiding pesticides



Pesticides can be harmful to pollinators. Use natural pest control methods like companion planting, introducing beneficial insects, and handpicking pests. Avoid the use of pesticides, especially during the daytime when pollinators are most active.

### Maintenance Tips

To maintain a pollinator-friendly garden, deadhead spent blooms to encourage more flowering, water regularly, and avoid using synthetic fertilizers. Incorporate compost and organic matter into the soil instead. Regular maintenance will keep your garden healthy and attractive to pollinators.



Pollinators are essential for the health of our environment and food system, so creating a pollinator-friendly garden can help support them. Provide food, water, shelter, and avoid pesticides to attract pollinators. Do your part to protect and support these important species.

Spread the word about creating pollinator-friendly gardens and check out Yardener for more information and resources on sustainable gardening practices. Together, we can make a positive impact on our environment and support the health of our planet. Share this infographic and start creating your own pollinator-friendly garden today!